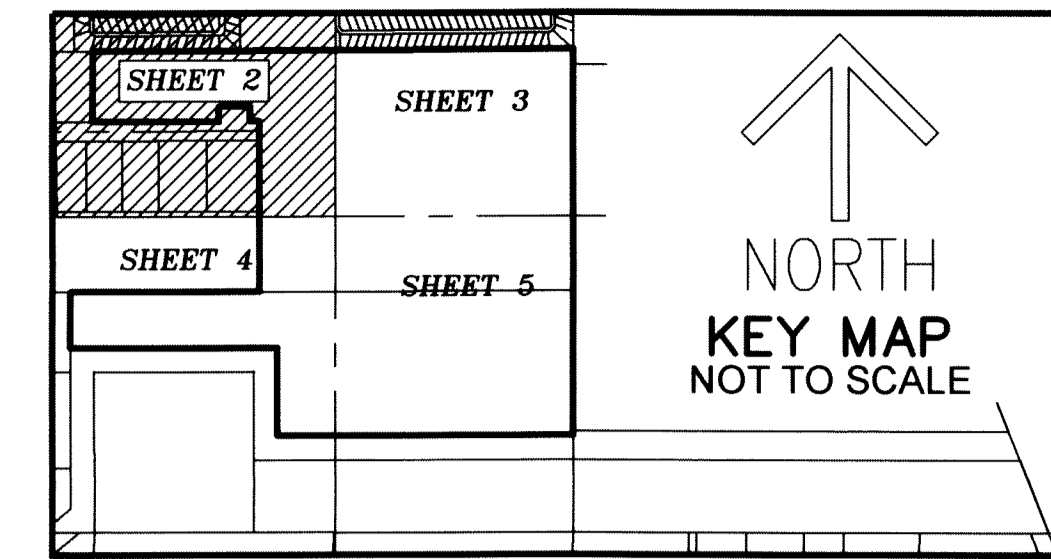


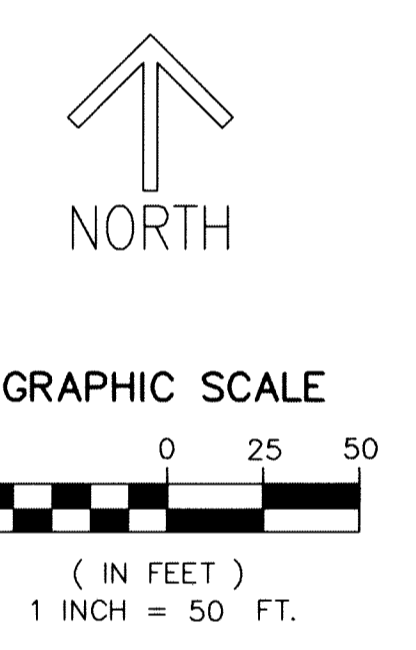
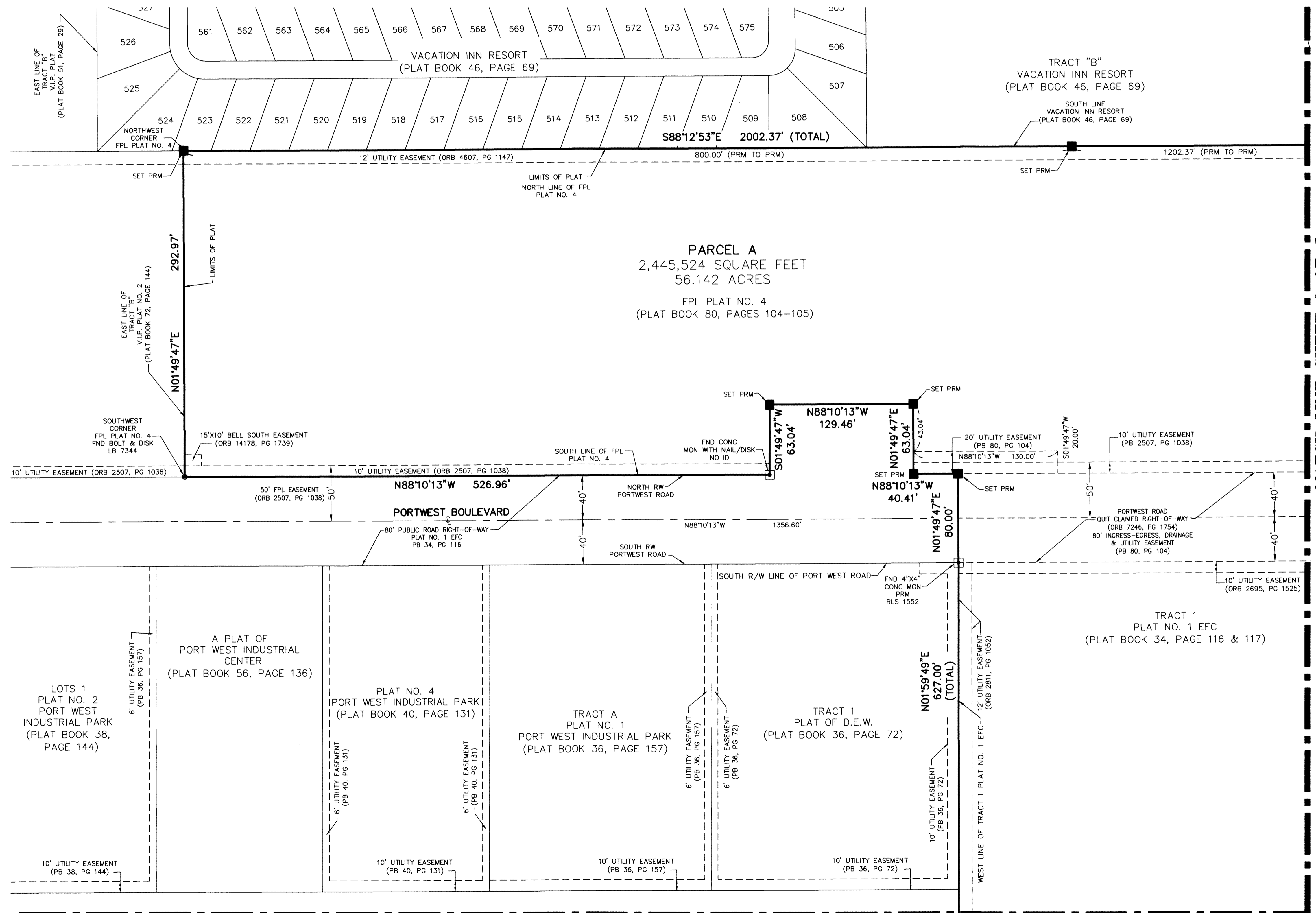
FPL PHYSICAL DISTRIBUTION CENTER (PDC) NORTH

BEING A REPLAT OF ALL OF PLAT NO.1 EFC, ACCORDING TO THE PLAT THEREOF AS RECORDED IN PLAT BOOK 34, PAGE 116 & 117, TOGETHER WITH ALL OF PLAT NO.2 FLORIDA POWER & LIGHT COMPANY, ACCORDING TO THE PLAT THEREOF AS RECORDED IN PLAT BOOK 43, PAGE 32 & 33, TOGETHER WITH ALL OF FPL PLAT NO. 4, ACCORDING TO THE PLAT THEREOF AS RECORDED IN PLAT BOOK 80, PAGE 104, PUBLIC RECORDS OF PALM BEACH COUNTY, FLORIDA.
SECTION 36, TOWNSHIP 42 SOUTH, RANGE 42 EAST, LYING IN THE CITY OF RIVIERA BEACH, PALM BEACH COUNTY, FLORIDA.



151
B
SHEET 2 OF 5

THIS INSTRUMENT PREPARED BY
RONNIE L. FURNISS
OF
CAULFIELD and WHEELER, INC.
SURVEYORS - ENGINEERS - PLANNERS
7900 GLADES ROAD, SUITE 100
BOCA RATON, FLORIDA 33434 - (561)392-1991
CERTIFICATE OF AUTHORIZATION NO. LB3591



- LEGEND/ABBREVIATIONS**
- BLVD - BOULEVARD
 - C - CENTERLINE
 - CMC - CERTIFIED MUNICIPAL CLERK
 - CONC - CONCRETE
 - E.P.B. - EAST PALM BEACH
 - FND - FOUND
 - FPL - FLORIDA POWER AND LIGHT COMPANY
 - ID - IDENTIFICATION
 - IR - IRON ROD
 - LB - LICENSED BUSINESS
 - LS - LICENSED SURVEYOR
 - MON - SURVEY MONUMENT
 - NO. - DENOTES NUMBER
 - N.P.B.C.W.C.D. - NORTHERN PALM BEACH COUNTY WATER CONTROL DISTRICT
 - ORB - OFFICIAL RECORD BOOK
 - PB - PLAT BOOK
 - P.E. - PROFESSIONAL ENGINEER
 - PG - PAGE OR PAGES
 - POB - POINT OF BEGINNING
 - PRM - PERMANENT REFERENCE MONUMENT
 - RLS - REGISTERED LAND SURVEYOR
 - R/W - RIGHT-OF-WAY
 - UE - UTILITY EASEMENT
 - PRM - INDICATES SET 4" x 4" x 24" CONCRETE PERMANENT REFERENCE MONUMENT WITH DISK STAMPED PRM LB3591
 - - SET FOUND PERMANENT REFERENCE MONUMENT 4" x 4" CONCRETE MONUMENT
 - - DENOTES FOUND PERMANENT REFERENCE MONUMENT AS NOTED
 - ✱ - INDICATES SECTION CORNER

MATCH LINE SHEET 4 OF 5

MATCH LINE SHEET 3 OF 5